

Returning to Bethlehem

It was a long journey, but Naomi and Ruth finally reached Bethlehem in Israel. People were very surprised to see Naomi back. Naomi and Ruth reached the little town when it was time for the barley harvest to start.

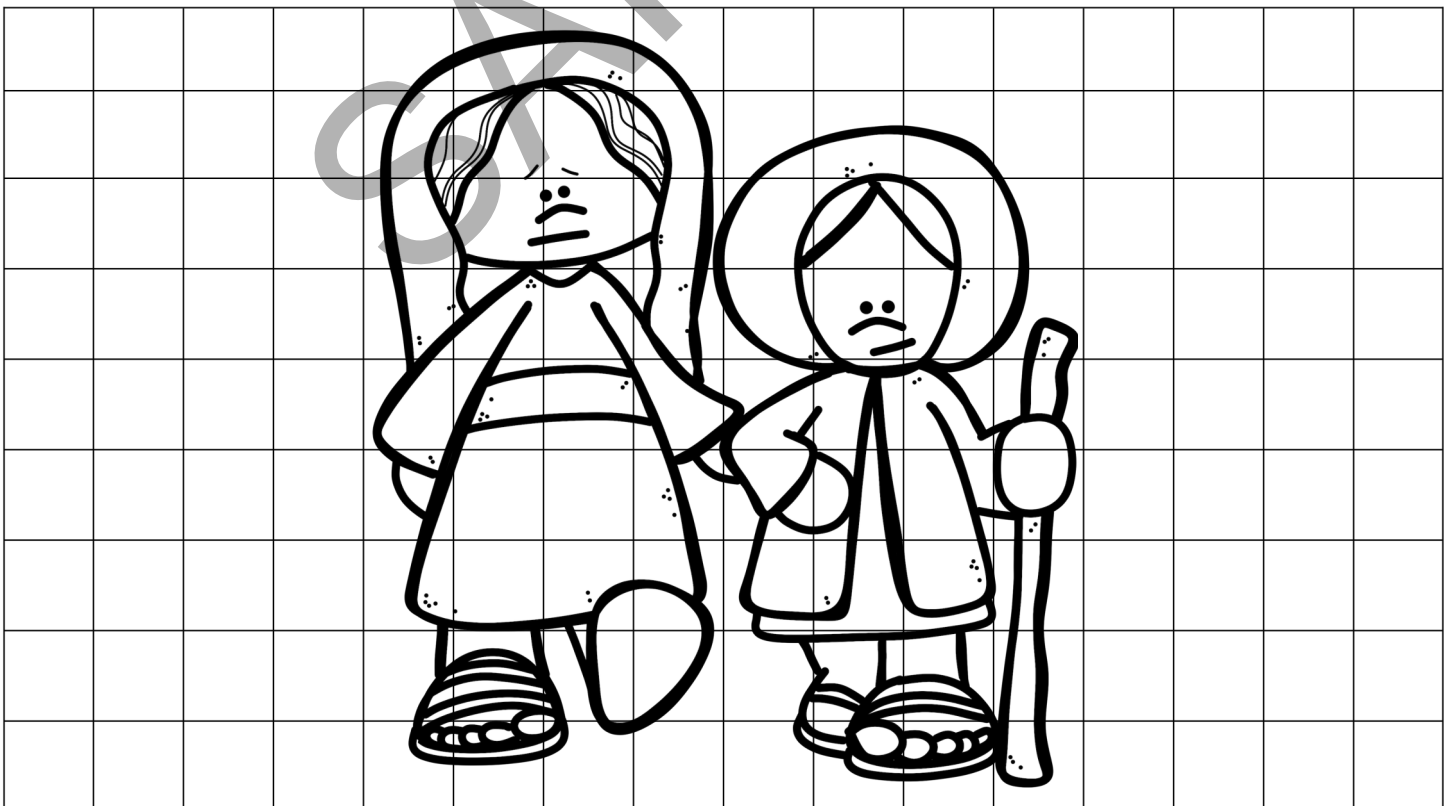
So the two of them went on until they came to Bethlehem. And when they came to Bethlehem, the whole town was stirred because of them. And the women said, "Is this Naomi?"

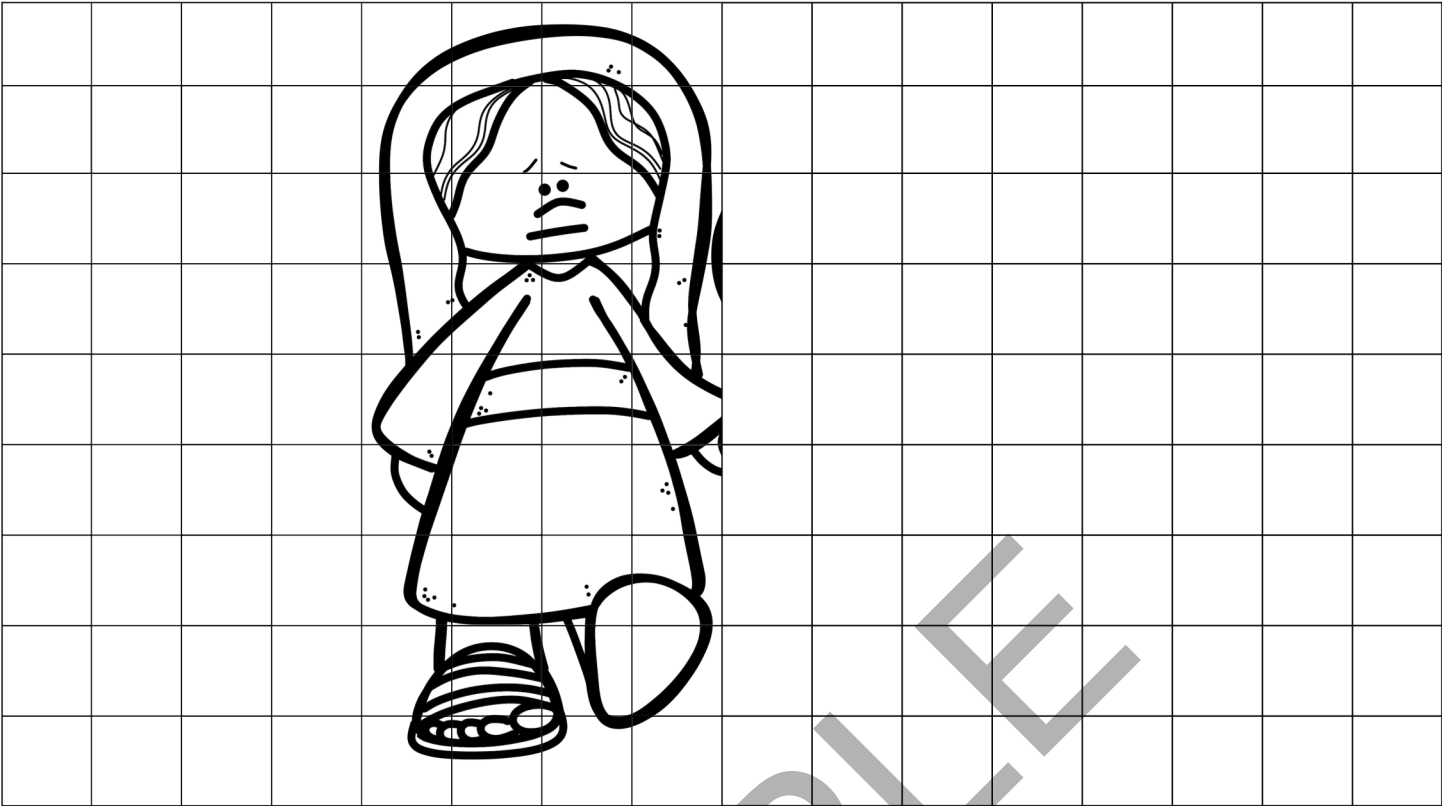
She said to them, "Do not call me Naomi; call me Mara, for the Almighty has dealt very bitterly with me. I went away full, and the Lord has brought me back empty. Why call me Naomi, when the Lord has testified against me and the Almighty has brought calamity upon me?"

So Naomi returned, and Ruth the Moabite her daughter-in-law with her, who returned from the country of Moab. And they came to Bethlehem at the beginning of barley harvest. Ruth 1:19-22

Follow these instructions to draw a picture representing Ruth and Naomi returning to Bethlehem like the one shown below:

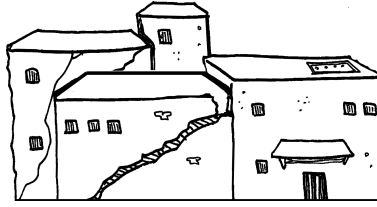
- Decide if you want to draw the right half of the picture or the left half of the picture and draw it in one of the first two grids. You can draw both if you'd like. Don't worry if you can't draw every detail. Just do your best and draw as much of the picture as you can.
- Now, using a blank grid, try drawing the whole picture.





Identify the Image

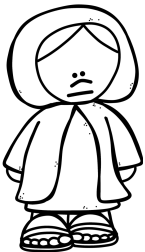
1. Which picture represents "Boaz"? Circle it.



2. Which picture represents "Boaz Marries Ruth"? Circle it.



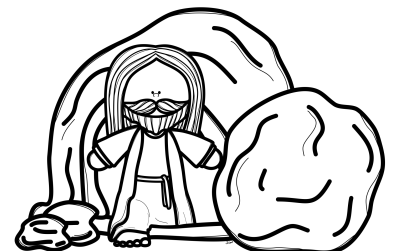
3. Which picture represents "Naomi in Moab"? Circle it.



4. Which picture represents "Obed's Descendant"? Circle it.

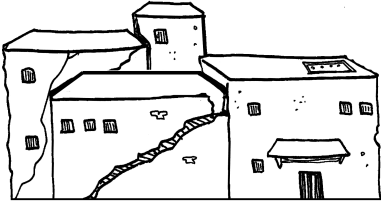
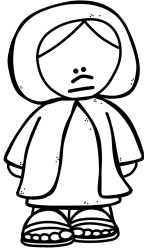


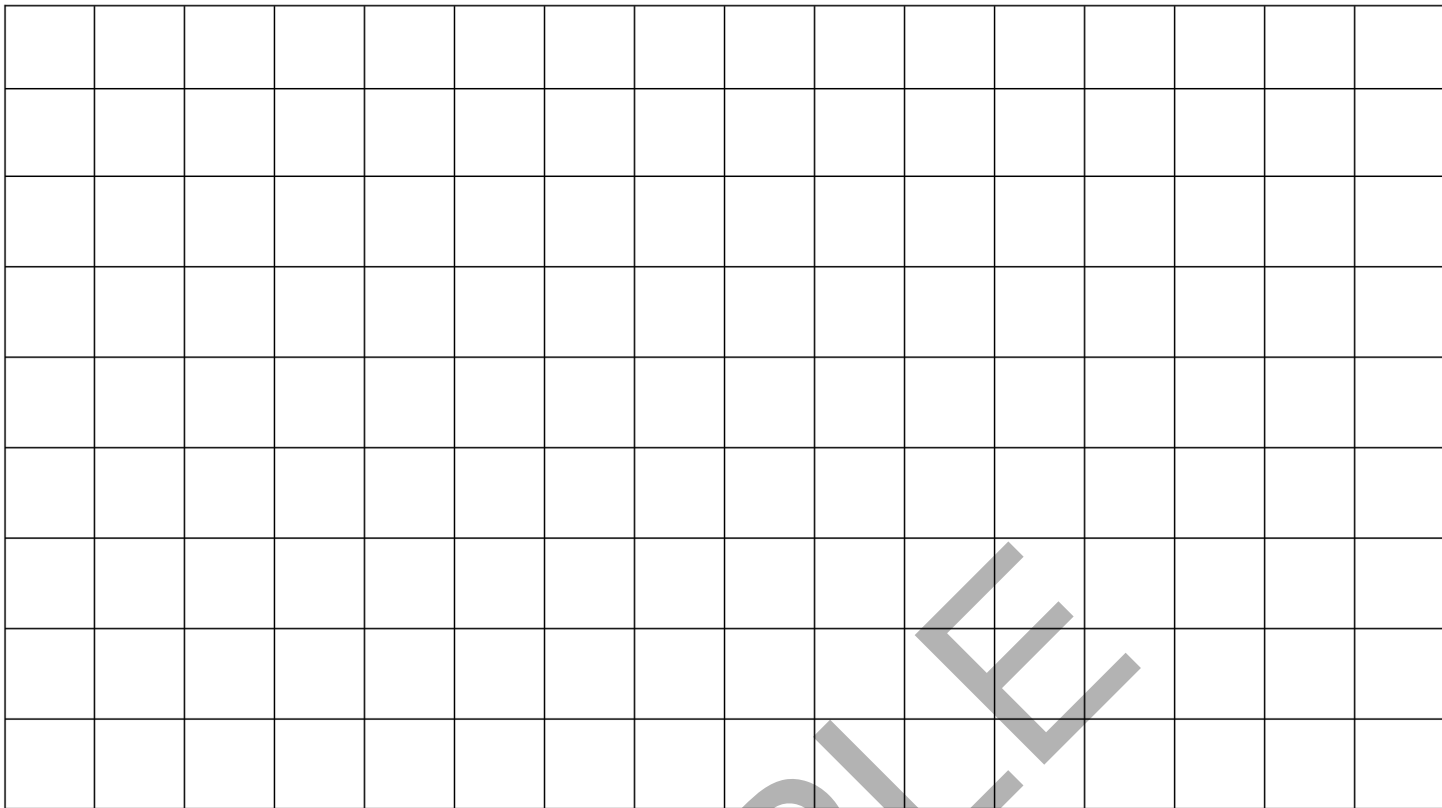
5. Which picture represents "Returning to Bethlehem"? Circle it.



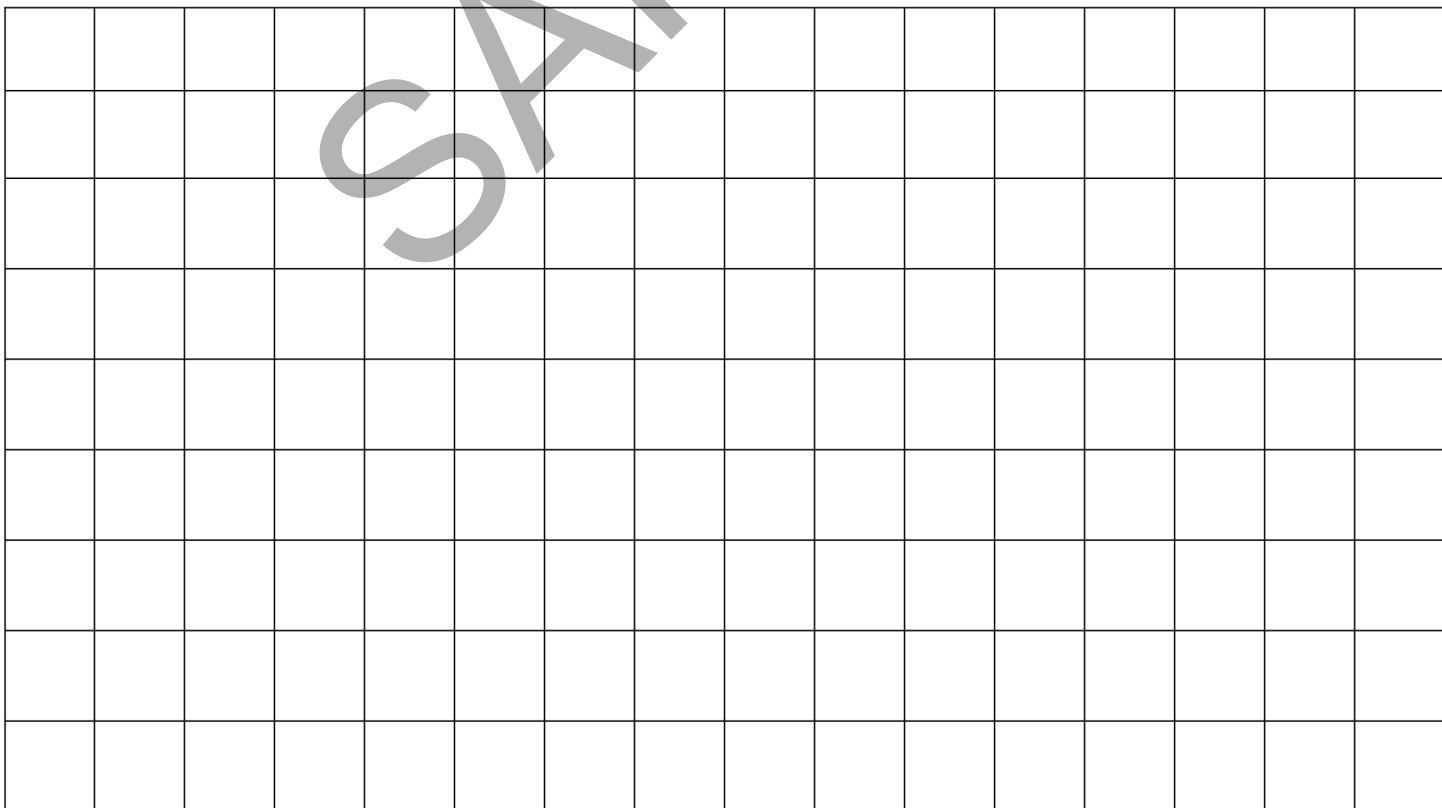
Chronological Order

Look at the pictures below. They each represent an event in the life of Ruth's story. Put a number on the line next to each event to show the order they happened in.





SAMPLE



Answer Key

Identify the Image

1.



6.



2.



7.



3.



8.



4.



9.



5.



10.

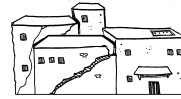


Chronological Order

1



6



5



7



10



2



4



9



8



3

